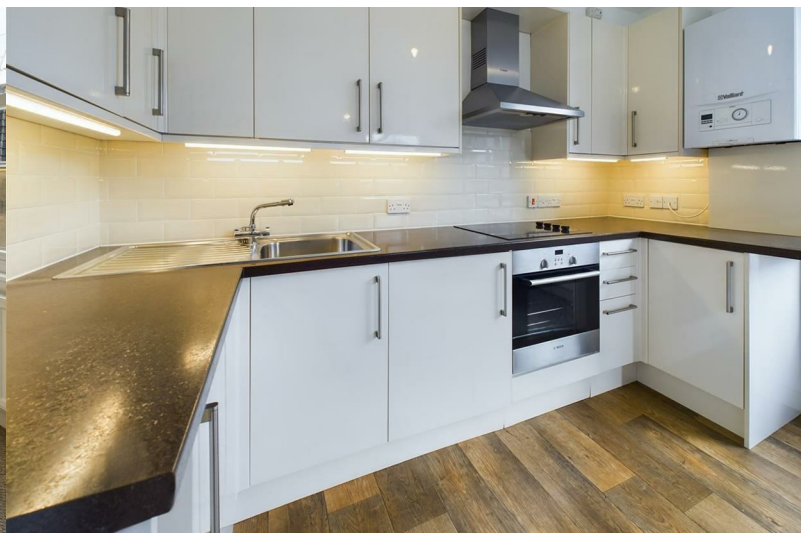




Flat 3, Francis House The Avenue

Combe Down, Bath, BA2 5EH

£995 PCM



Flat 3, Francis House The Avenue

Combe Down, Bath, BA2 5EH

£995 PCM



Entrance hall

Door to side. Radiator. Under stairs cupboard. Entry Phone. Carpet Flooring. Pendant Light Fitting.

Lounge/Diner/Kitchen

Double Glazed Windows. Radiators. TV Point. Telephone Point. Pendant Light Fittings. Carpet Flooring in Lounge/Dining area. Modern Fitted Kitchen with Wall and Base Units. Stainless Steel sink and drainer. Integrated Electric Oven and Hob. Integrated Fridge/Freezer. Integrated Washing Machine. Vinyl Wood Look Flooring.

Bedroom 1

Double Glazed Window to Side. Radiator. Pendant Light Fitting. Carpet Flooring.

Family Bathroom

Modern White Suite Comprising Shower Cubicle. Vanity Wash Hand Basin. Low Level WC. Built In Cupboards. Mirror with Built In Light. Ladder Radiator. Extractor Fan. Vinyl Tile Look Flooring.



Road Map



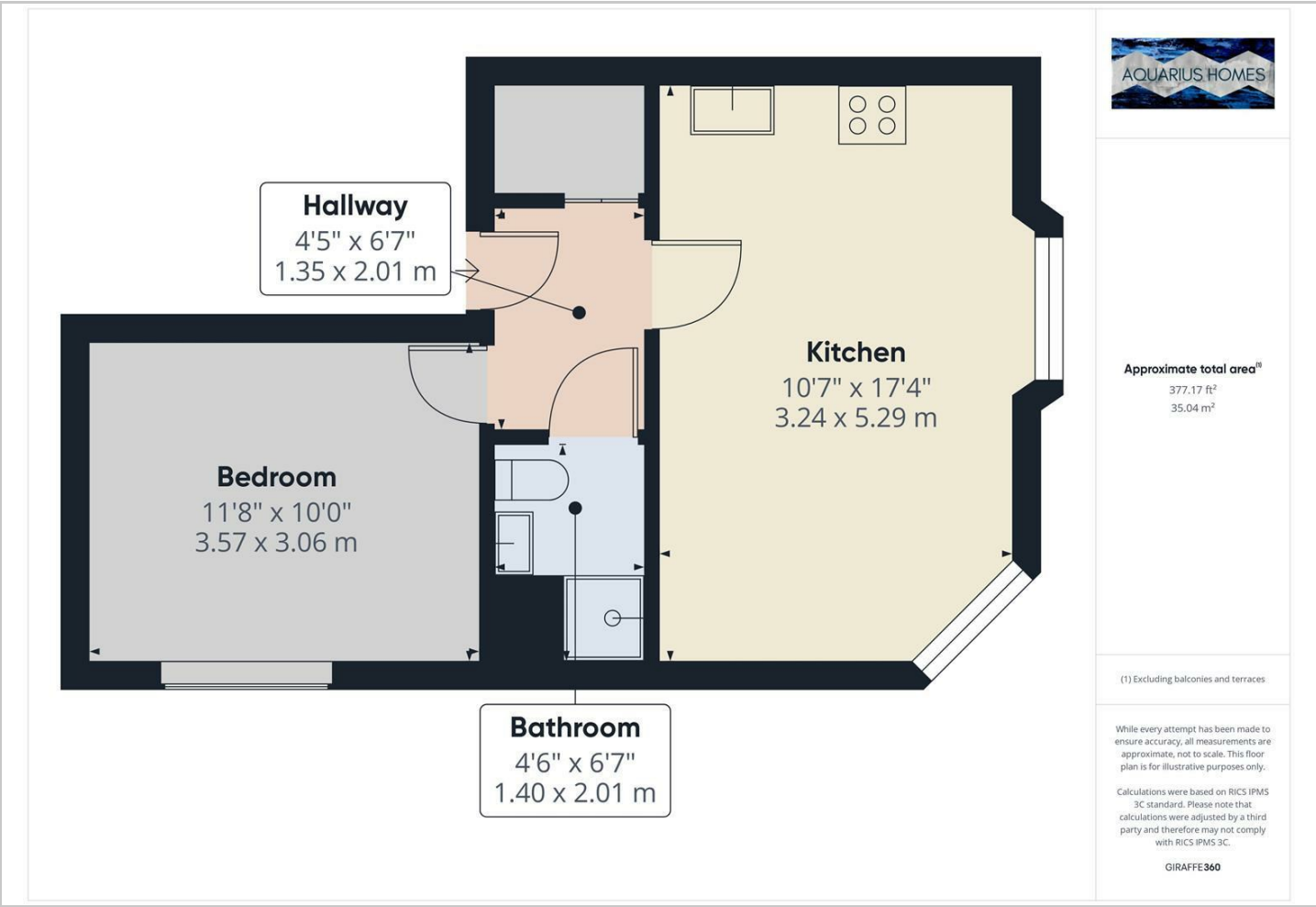
Hybrid Map



Terrain Map



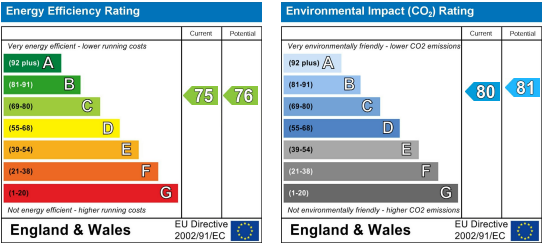
Floor Plan



Viewing

Please contact our Aquarius Homes Office on 01225 840007 if you wish to arrange a viewing appointment for this property or require further information.

Energy Efficiency Graph



These particulars, whilst believed to be accurate are set out as a general outline only for guidance and do not constitute any part of an offer or contract. Intending purchasers should not rely on them as statements of representation of fact, but must satisfy themselves by inspection or otherwise as to their accuracy. No person in this firm's employment has the authority to make or give any representation or warranty in respect of the property.